

Cantata Pastorale

per la nascita di Nostro Signore

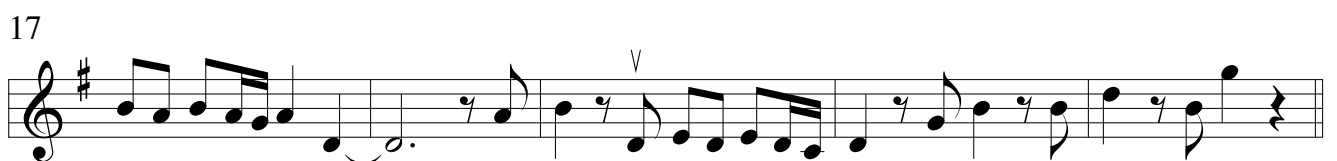
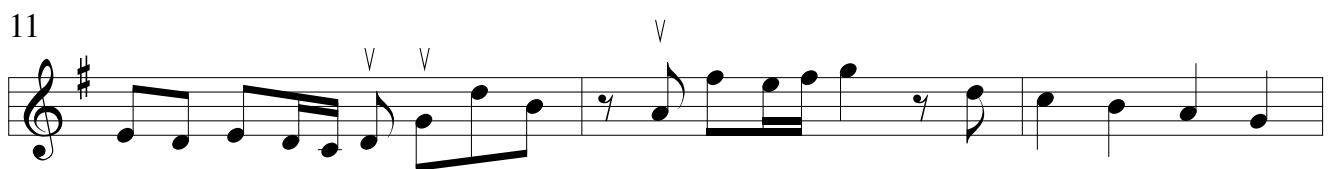
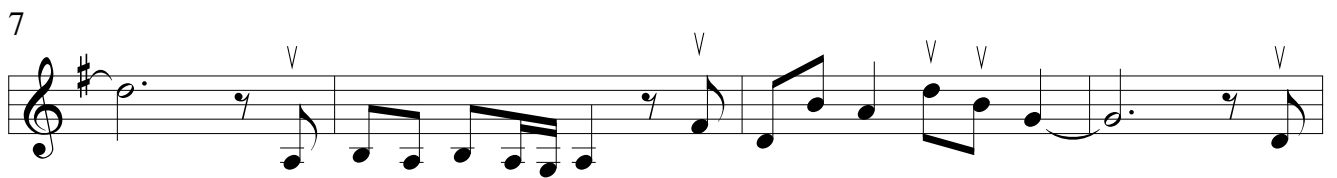
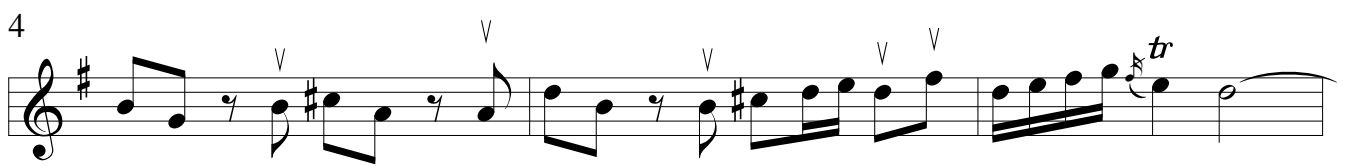
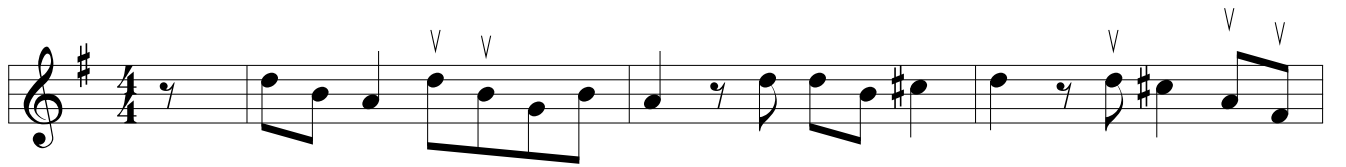
Alessandro Scarlatti

(Italy, 1660 - 1725)

Violin 2 (transposed down a tone)

Violin 2

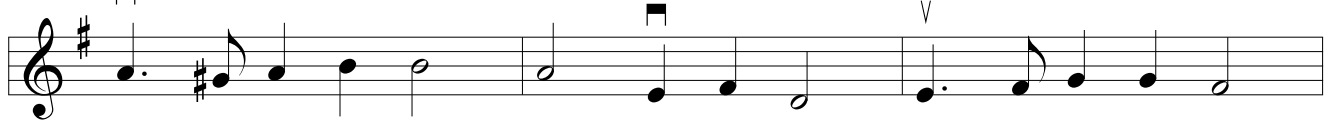
1. Sinfonia



22



26



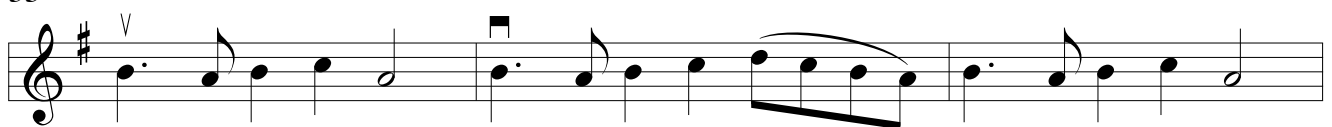
29



32



35



38



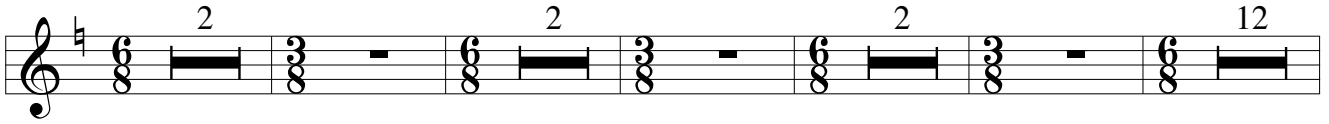
2. Recitative (O di Betlemme altera povertà)

42

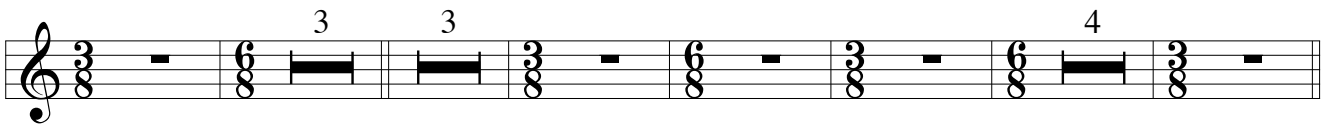


3. Aria (Dal bel seno d'una stella)

54



75



4. Recitative (Preso d'uomo la forma)

89



Da Capo

5. Aria (L'autor d'ogni mio bene)

7 **soprano:**



L'au - tor d'o- gni mio be-ne Scio-glie le mie ca-te-ne, E

111



stret - to, stret - to, e stret-to in fa - sce, e stret-to in fa - sce, l'Au-

114



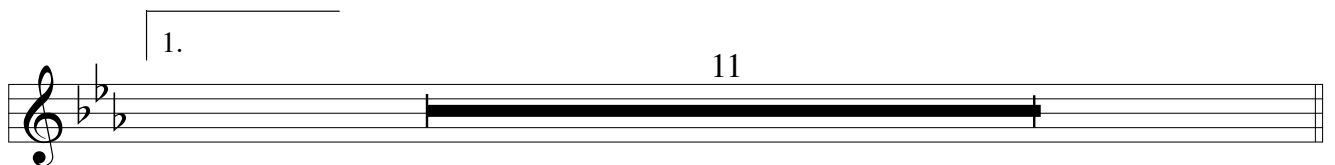
tor d'o-gni mio be-ne Scio-glie le mie ca-te-ne, scio - glie le mie ca-te - ne, E

117



stret-to in fa - sce, e stret - to, stret - to, stret-to in fa - sce.

1.



2.

130



6. Recitative (Fortunati, fortunati pastori!)

133

12

